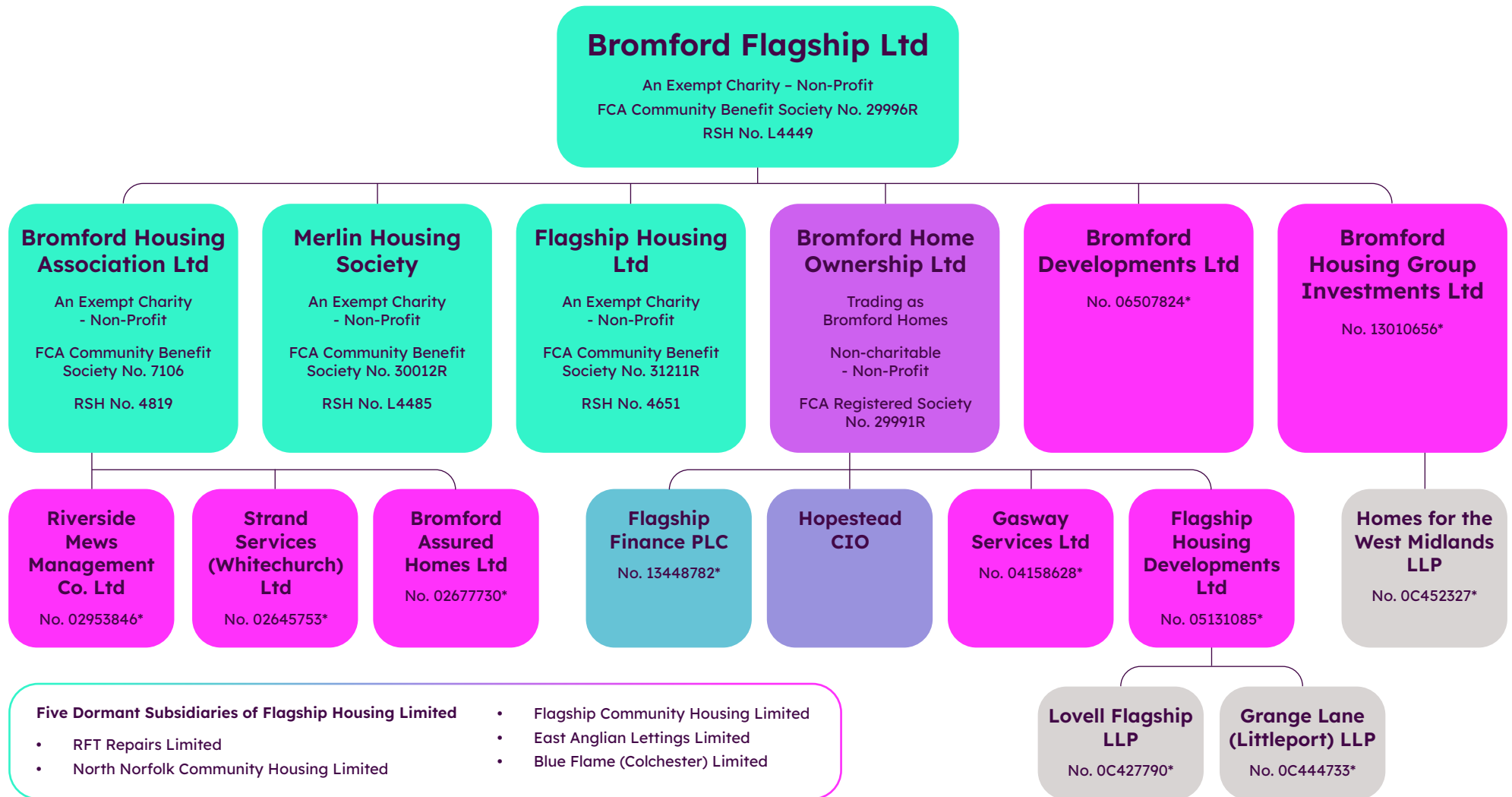


Statutory Organisation Chart



Registered Provider
Charitable

Charitable Incorporated
Organisation

Public Limited
Company

* Incorporated under the Companies Act

Registered Provider
Non-Charitable

Private Limited
Company

Limited Liability
Partnership (LLP) - JV

RSH: Regulator of Social Housing

FCA: Financial Conduct Authority