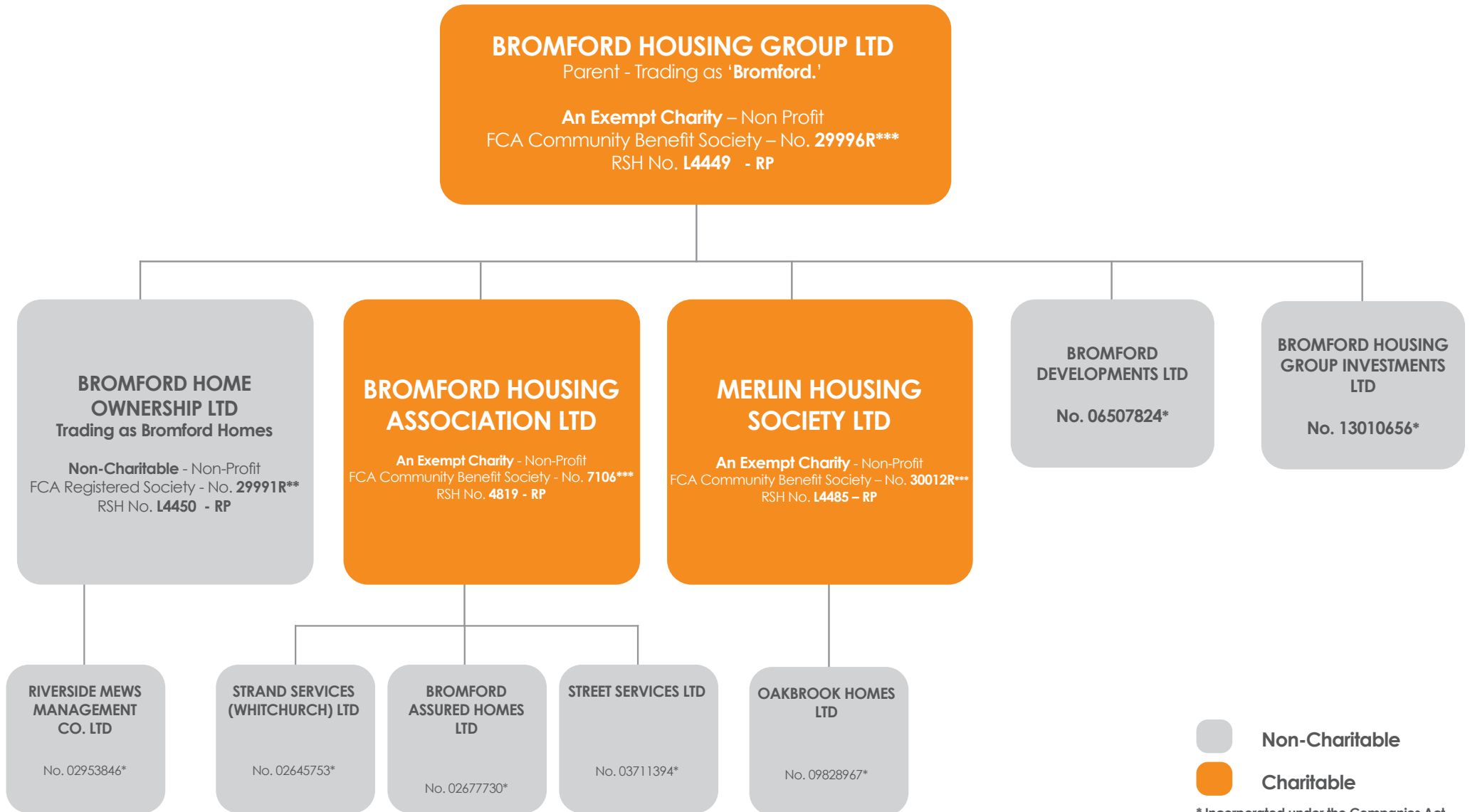


# Bromford Group Structure



Non-Charitable  
 Charitable

\* Incorporated under the Companies Act  
 \*\* FCA Registered Society  
 \*\*\* FCA Community Benefit Society  
 (registration under the Co-operative and  
 Community Benefit Societies Act 2014)  
 RP - Registered Provider  
 RSH – Regulator of Social Housing  
 FCA - Financial Conduct Authority