

Bromford. Chamberlayne House, Stow-on-the-Wold: Location & Context



KEY
- - - Planning Boundary



As part of Bromford's aim to provide the right home for each of our customers we identified that our independent living scheme at Chamberlayne House and the land adjacent to 33-37 Bartletts Park needed regenerating.

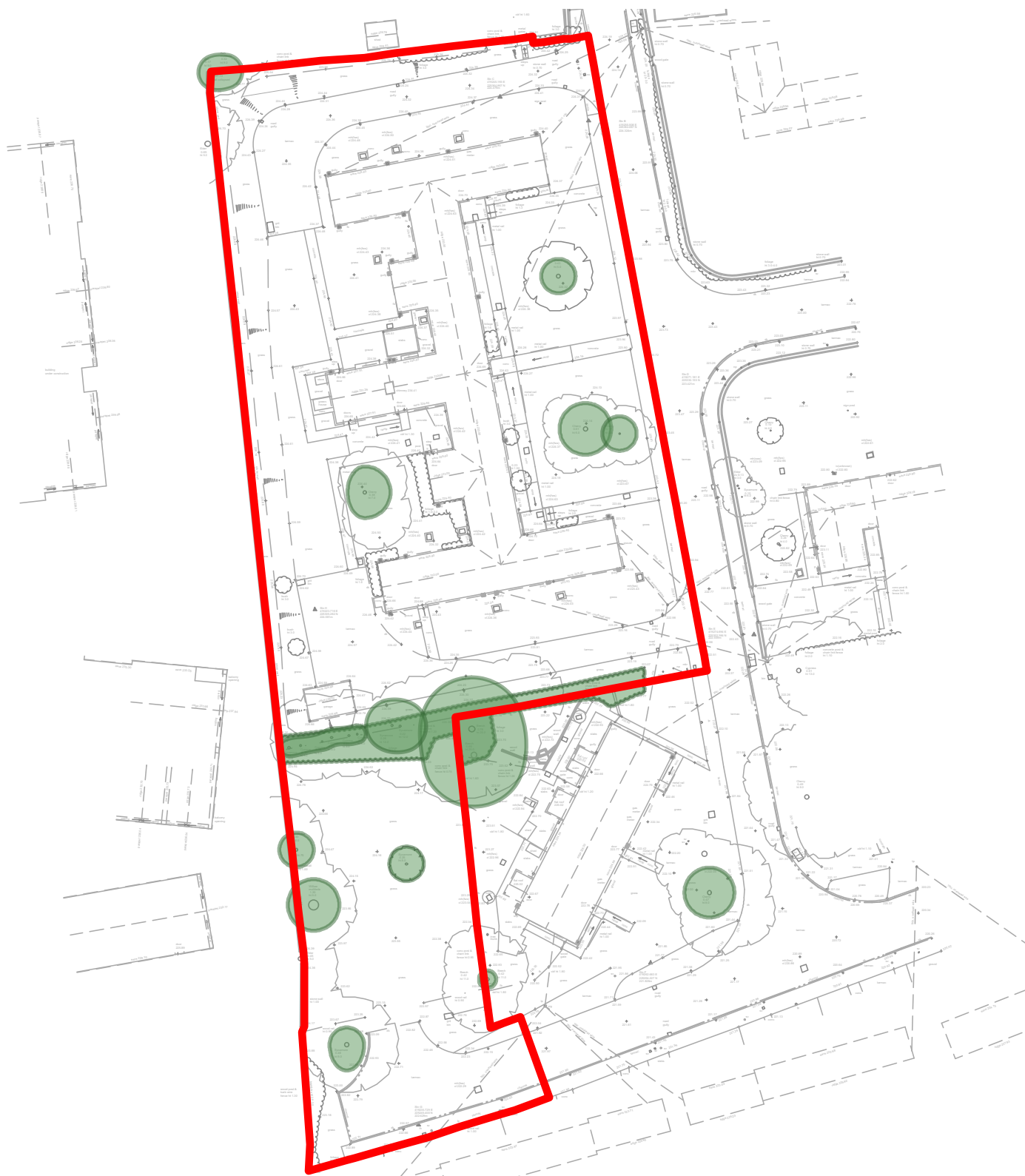
The existing accommodation of sheltered housing located in one large two storey block of flats, are small and the energy efficiency ratings are low.

When considering customer requirements and future maintenance requirements it is considered that investing in new energy efficient homes is the best option and would bring huge benefits to both our customers and the wider community.

This redevelopment proposes 18 number new affordable homes, with a mix of houses flats and bungalows with appropriate private amenity and parking facilities.

We welcome your comments on our proposals before we submit the planning application to Cotswold District Council for consideration.

Site Location Plan (Not To Scale)



KEY
- - - Planning Boundary
● Existing Trees & Planting

0 5 20m
2 10

Existing Site Plan (Not To Scale)