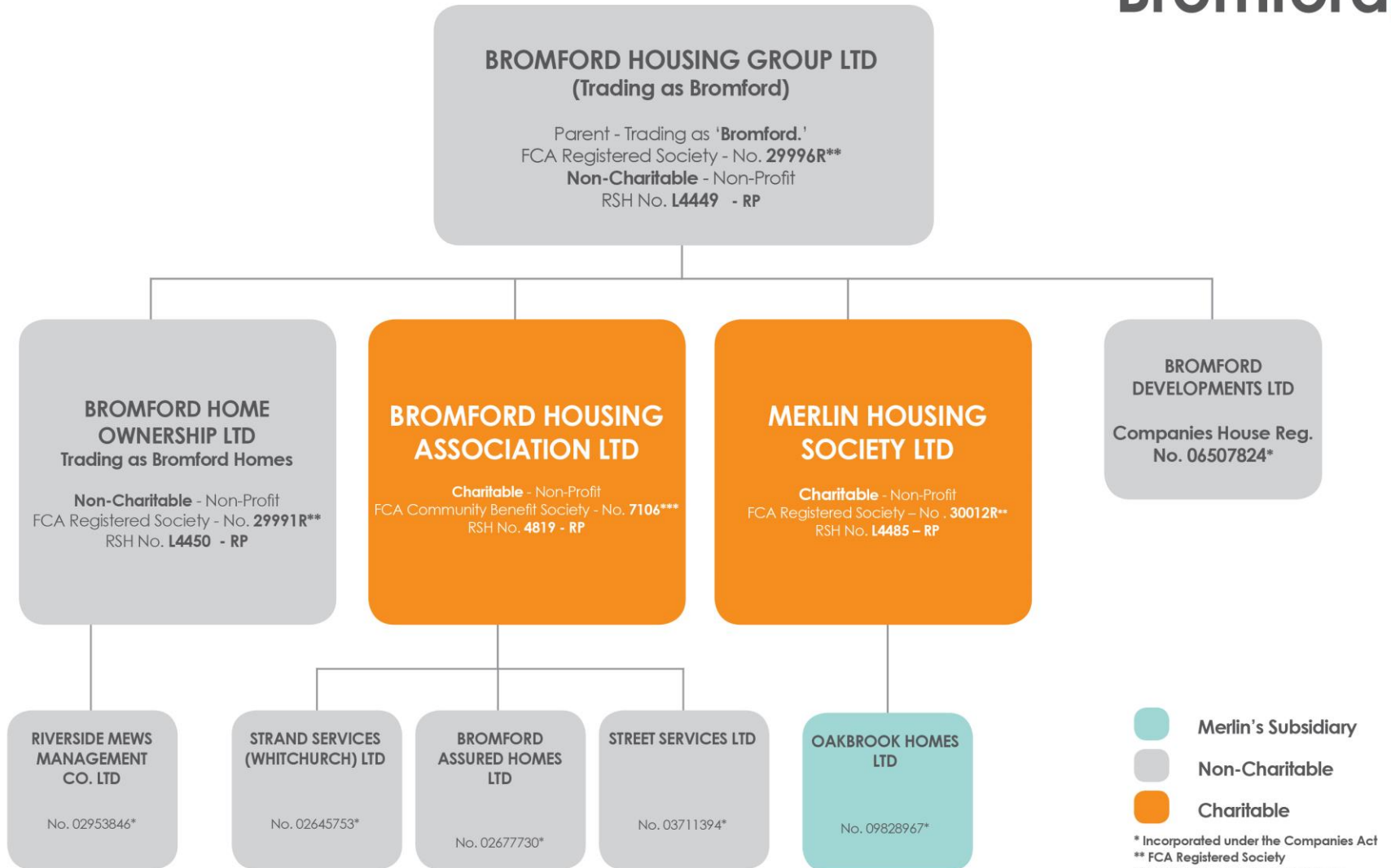


# Bromford Group Structure

**Bromford.**



- Merlin's Subsidiary
- Non-Charitable
- Charitable

\* Incorporated under the Companies Act  
 \*\* FCA Registered Society  
 \*\*\* FCA Community Benefit Society (registration under the Co-operative and Community Benefit Societies Act 2014)  
 RP - Registered Provider  
 RSH - Regulator of Social Housing  
 FCA - Financial Conduct Authority