
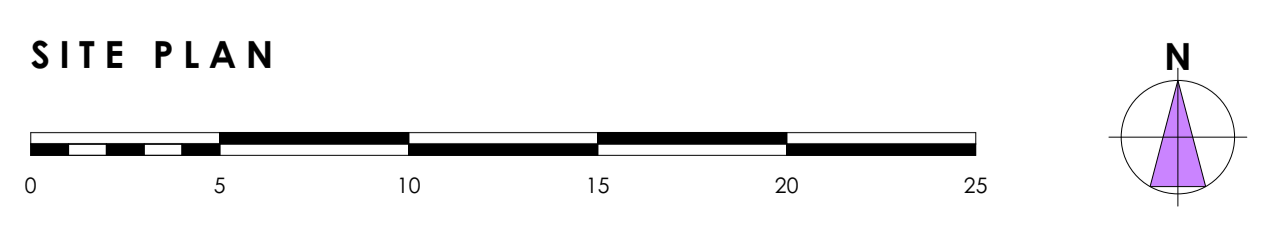


The copyright of this drawing is vested in the designer and should not be reproduced, copied or used for any other purpose than that it is intended for without the prior written consent of Oakley Architects.

**EXTERNAL WORKS LEGEND**

-  Existing trees.
-  Existing trees removed.
-  Large individual specimen trees 20-25cm girth.
-  Ornamental shrubs and herbaceous planting, min 3 litres pot.
-  Grass.
-  1.8m & 1m high (to sill surrounding boundary height) close board timber gates with galvanised steel catch, hasp and staple for padlock. Clear width 900mm.
-  600mm high stone wall to match surrounding boundary stone walls.
-  1.8m high stone boundary wall to match surrounding boundary stone walls.
-  1.8m high close board fence with concrete posts & concrete gravel boards.
-  1350m high timber post & rail fence with mesh infill.
-  1.5m high close board fence with concrete posts & concrete gravel boards & 300mm trellis to top.
-  1.2m high chainlink fence (timber posts) with native hedge.
-  Native hedge.
-  Secure treated timber sheds, door to be secured by padlock. Sheds laid on a 450 x 450mm concrete slab base. Shed size for 1 bed houses: 2100x1500mm. Shed size for 2 & 3 bed houses: 2400x1800mm. Cycle storage located in garden shed, via a fixed hoop, capable of securing both wheel and frame, fixed securely into a concrete base. Base fixing to meet 'Solid Secure' silver standard. 1 bed houses to have secure fixing for 1 cycle. 2 & 3 bed houses to have secure fixing for 2 cycles.
-  240 litre general waste bin.
-  240 litre garden waste bin.
-  Recycle bin.
-  450 x 450mm concrete paving slabs. 1200mm<sup>2</sup> flat landing to entrance doors with 900mm wide private path or 1200mm shared paths, rear patios 1800mm deep with additional paving for bin access.
-  Tarmac.
-  Block paving. Colour: TBA with parking spaces demarcated with contrasting block.
-  Landscaping adjacent to parking spaces must have a mature growth height or be maintained at no higher than 500mm.
-  Soft landscaping to be in accordance with Landscape Designers details.
-  Refer to structural engineers drawing for extent of retaining concrete gravel boards and retaining walls.
-  Swift box.
-  House Martin nest.
-  Sparrow terrace.
-  Bat tube.



REV	DATE REVISED	REVISION	REV BY
D	01.05.2019	UPDATED FOR PLANNING.	LO
C	17.04.2019	SHEETS UPDATED.	LO
B	14.04.2019	UPDATED FOR PLANNING.	LO
A	01.04.2019	GENERAL UPDATE.	LO

**OAKLEY ARCHITECTS LTD**  
 28 HILLWOOD ROAD  
 SUTTON COLDFIELD  
 WEST MIDLANDS  
 B75 5QL  
 T: 0121 238 0683  
 E: design@oakleyarchitects.co.uk  
 www.oakleyarchitects.co.uk

CLIENT  
 Bromford

PROJECT  
 Bromford Regeneration Sites

DRAWING TITLE  
 Site Plan 1:200 (2 of 2)

DRAWING SCALE 1:200 (A1)	DATE DRAWN 20.03.2019
DRAWN BY Lisa Oakley	CHECKED BY Simon Oakley
JOB NUMBER 201733	DRAWING NUMBER 05D