
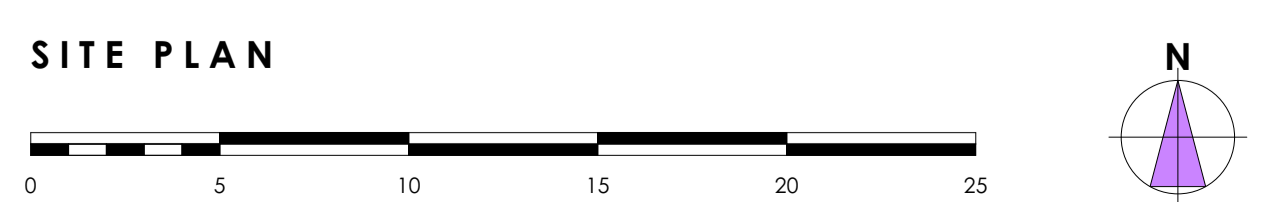


EXTERNAL WORKS LEGEND

-  Existing trees.
-  Existing trees removed.
-  Large individual specimen trees 20-25cm girth.
-  Ornamental shrubs and herbaceous planting, min 3 litres pot.
-  Grass.
-  1.8m & 1m high (to sill surrounding boundary height) close board timber gates with galvanised steel catch, hasp and staple for padlock. Clear width 900mm.
-  600mm high stone wall to match surrounding boundary stone walls.
-  1.8m high stone boundary wall to match surrounding boundary stone walls.
-  1.8m high close board fence with concrete posts & concrete gravel boards.
-  1350m high timber post & rail fence with mesh infill.
-  1.5m high close board fence with concrete posts & concrete gravel boards & 300mm trellis to top.
-  1.2m high chainlink fence (timber posts) with native hedge.
-  Native hedge.
-  Secure treated timber sheds, door to be secured by padlock. Sheds laid on a 450 x 450mm concrete slab base. Shed size for 1 bed houses: 2100x1500mm. Shed size for 2 & 3 bed houses: 2400x1800mm. Cycle storage located in garden shed, via a fixed hoop, capable of securing both wheel and frame, fixed securely into a concrete base. Base fixing to meet 'Sold Secure' silver standard. 1 bed houses to have secure fixing for 1 cycle. 2 & 3 bed houses to have secure fixing for 2 cycles.
-  240 litre general waste bin.
-  240 litre garden waste bin.
-  Recycle bin.
-  450 x 450mm concrete paving slabs. 1200mm² flat landing to entrance doors with 900mm wide private path or 1200mm shared paths, rear patios 1800mm deep with additional paving for bin access.
-  Tarmac.
-  Block paving. Colour: TBA with parking spaces demarcated with contrasting block.
-  Landscaping adjacent to parking spaces must have a mature growth height or be maintained at no higher than 500mm.
-  Soft landscaping to be in accordance with Landscape Designers details.
-  Refer to structural engineers drawing for extent of retaining concrete gravel boards and retaining walls.
-  Swift box.
-  House Martin nest.
-  Sparrow terrace.
-  Bat tube.



REV	DATE REVISED	REVISION	LO	REV BY
E	01.05.2019	UPDATED FOR PLANNING	LO	
D	17.04.2019	SHEDS UPDATED	LO	
C	16.04.2019	UPDATED FOR PLANNING	LO	
R	05.04.2019	GENERAL UPDATES	LO	
A	01.04.2019	GENERAL UPDATES	LO	

OAKLEY ARCHITECTS LTD
 28 HILLWOOD ROAD
 SUTTON COLDFIELD
 WEST MIDLANDS
 B75 5QL
 T: 0121 238 0683
 E: design@oakleyarchitects.co.uk
 www.oakleyarchitects.co.uk

CLIENT: Bromford

PROJECT: Bromford Regeneration Sites

DRAWING TITLE: Site Plan 1:200 (1 of 2)

DRAWING SCALE: 1:200 (A1) DATE DRAWN: 20.03.2019

DRAWN BY: Lisa Oakley CHECKED BY: Simon Oakley

JOB NUMBER: 201733 DRAWING NUMBER: 04E