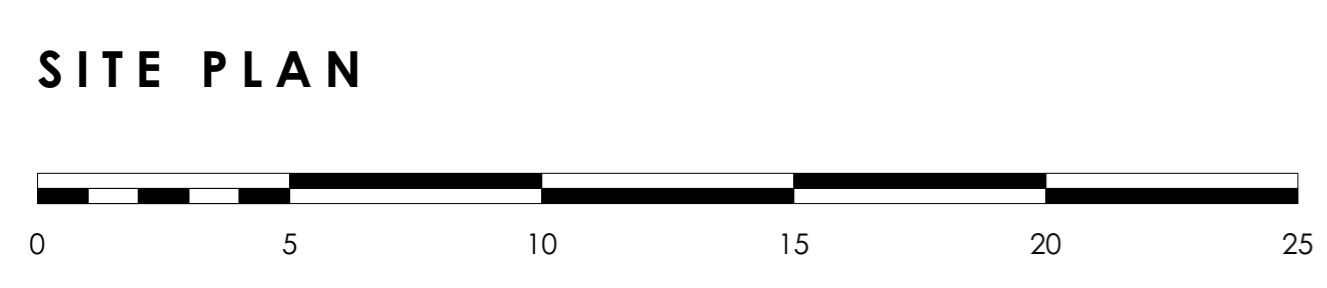


- EXTERNAL WORKS LEGEND**
- Existing trees.
  - Existing trees removed.
  - Large individual specimen trees 20-25cm girth.
  - Ornamental shrubs and herbaceous planting, min 3 litres pot.
  - Grass.
  - Rotary cloths dryer. Minimum 6m drying line.
  - 1.8m & 1m high (to suit surrounding boundary height) close board timber gates with galvanised steel catch, hasp and staple for padlock. Clear width 900mm.
  - 600mm high stone wall to match surrounding boundary stone walls.
  - 1.8m high stone boundary wall to match surrounding boundary stone walls.
  - 1.8m high close board fence with concrete posts & concrete gravel boards.
  - 1350m high timber post & rail fence with mesh infill.
  - Secure treated timber sheds with 1 viewing window, door to be secured by padlock. Sheds laid on a 450 x 450mm concrete slab base.
  - Shed size for 2 & 3 bed houses: 2400 x 1800mm.
  - Cycle storage located in garden shed, via a fixed hoop, capable of securing both wheel and frame, fixed securely into a concrete base. Base fixing to meet 'Sold Secure silver standard. 2 & 3 bed houses to have secure fixing for 2 cycles.
  - Rainwater butts with stands, childproof lids and overflow connection. 2 bed house to have 150 litre, 3 & 4 bed house to have 200 litre.
  - 210 litre compost bin with lid.
  - 240 litre general waste bin.
  - 240 litre garden waste bin.
  - Recycle bin.
  - 1500mm turning circle for wheelchair access.
  - 450 x 450mm concrete paving slabs. 1200mm<sup>2</sup> flat landing to entrance doors with 900mm wide private path or 1200mm shared paths. rear patios 1800mm deep with additional paving for bin access.
  - Tarmac.
  - Block paving. Colour: TBA with parking spaces demarcated with contrasting block.
- Landscaping adjacent to parking spaces must have a mature growth height or be maintained at no higher than 500mm.
- Soft landscaping to be in accordance with Landscape Designers details.
- Refer to structural engineers drawing for extent of retaining concrete gravel boards and retaining walls.



REV	DATE REVISED	REVISION	REV BY
A	01.04.2019	GENERAL UPDATES	JO

**OAKLEY ARCHITECTS LTD**  
 28 HILLWOOD ROAD  
 SUTTON COLDFIELD  
 WEST MIDLANDS  
 B75 5QL  
 T: 0121 238 0683  
 E: design@oakleyarchitects.co.uk  
 www.oakleyarchitects.co.uk

CLIENT  
Bromford

PROJECT  
Bromford Regeneration Sites

DRAWING TITLE  
Site Plan (2 of 2)

DRAWING SCALE  
1:150 (A1)

DATE DRAWN  
20.03.2019

DRAWN BY  
Lisa Oakley

CHECKED BY  
Simon Oakley

JOB NUMBER  
201733

DRAWING NUMBER  
**05A(C)**